



**106 New Peachey Lane
Uxbridge, UB8 3SY
£2,220 PCM**

Deposit required £2,561

**Available date 1st
September 2025**

****STUDENTS****

4 BEDROOMS - AVAILABLE 1/09/2025

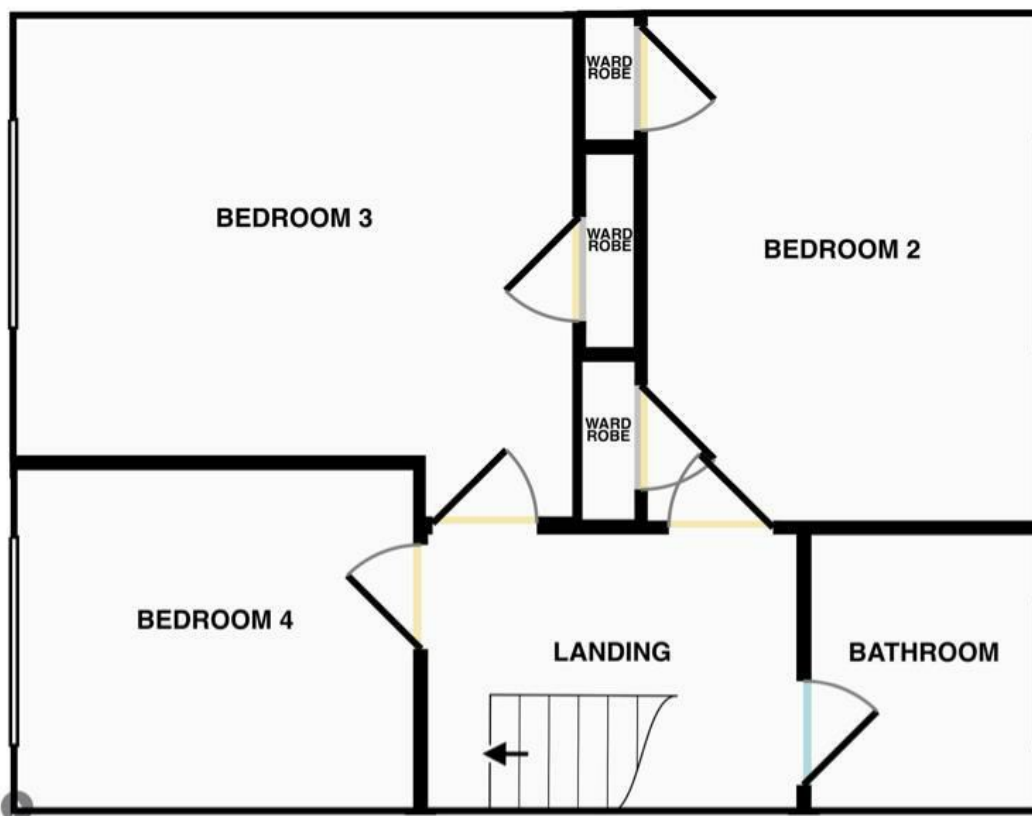
The rental payments equate to approx £555 per person per month or £128 per person per week excluding bills.

UniHomes offer a bills package for £25 per person per week. (Incl Gas, Electric, Water, TV licence and internet) which can be organised through Nupad initially.

COUNCIL TAX BAND D
EPC E

Nupad offer this excellent FOUR-bedroom house comprising of FOUR FURNISHED BEDROOMS , a LOUNGE, BATHROOM AND KITCHEN facilities. Outside there is a front and rear garden with on street parking (not permitted)

The property is ideal for students at Brunel University as it's walking distance to the university. It is also nearby to direct bus routes to Uxbridge Town Centre, Heathrow, Stockley Park and the local underground station, which provides further access to Central London.



| Energy Efficiency Rating | | Current | Potential |
|---|--|-------------------------|-----------|
| Very energy efficient - lower running costs | | | |
| (92 plus) A | | | 86 |
| (81-91) B | | | |
| (69-80) C | | | |
| (55-68) D | | | |
| (39-54) E | | | |
| (21-38) F | | | |
| (1-20) G | | | |
| Not energy efficient - higher running costs | | | |
| England & Wales | | EU Directive 2002/91/EC | |

| Environmental Impact (CO ₂) Rating | | Current | Potential |
|---|--|-------------------------|-----------|
| Very environmentally friendly - lower CO ₂ emissions | | | |
| (92 plus) A | | | |
| (81-91) B | | | |
| (69-80) C | | | |
| (55-68) D | | | |
| (39-54) E | | | |
| (21-38) F | | | |
| (1-20) G | | | |
| Not environmentally friendly - higher CO ₂ emissions | | | |
| England & Wales | | EU Directive 2002/91/EC | |