

**3 Green Lane
Watford, WD19 4NL
Asking Price £1,399,950**

A beautifully presented four-bedroom, two-bathroom detached family home, this spacious and stylish property offers well-balanced accommodation with, modern finishes – perfect for practical family living and ideally located near , and local amenities and transport links.

On the ground floor, a generous entrance hallway leads to a bright and welcoming reception room, a modern open-plan kitchen/dining area, a separate utility room, and minimalist guest WC.

Upstairs, there are four well-proportioned bedrooms and a contemporary family bathroom. The principal suite benefits from a vaulted ceiling, a sleek en- suite shower room, and a walk-in wardrobe. The loft provides excellent storage space or potential for a kids playroom/a home office.

Outside, the property benefits from off-street parking for multiple vehicles and a private, well-screened rear garden—ideal for outdoor dining and relaxation.

3 Green Lane, Watford, WD19 4NL

Hallway



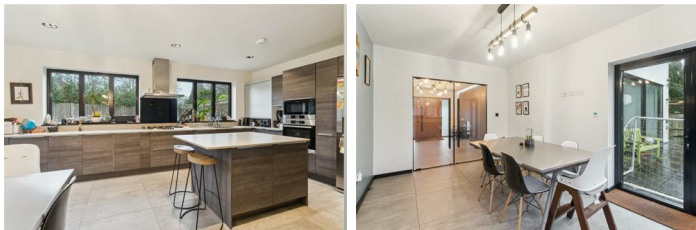
spacious entrance hall with tile flooring and ample room for coats and shoes, providing a practical yet stylish welcome to this family-friendly home.

Reception Room



Spacious living room with Under floor heating.

Kitchen



Designed with family life in mind, the kitchen offers generous storage and easy access to the utility room for added convenience. Kitchen features space for a dining table.

WC

Downstairs WC

Master Bedroom



Master bedroom features a walk in wardrobe and a private ensuite.

Ensuite



Ensuite, with access from the master bedroom featuring a shower.

Bedroom One



Spacious Double bedroom.

3 Green Lane, Watford, WD19 4NL

Bedroom Two



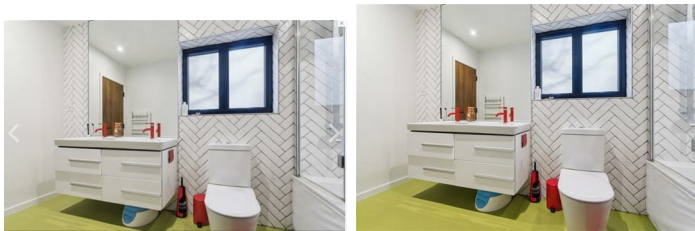
Spacious Double bedroom with in Built wardrobes.

Bedroom Three.



Spacious double bedroom with direct access to the upstairs family bathroom.

Family Bathroom



Family Bathroom featuring a bath

Loft room



Outside

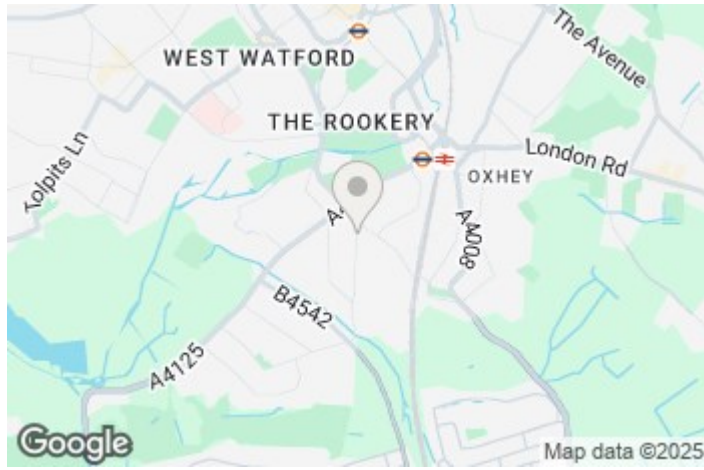
Front



Rear garden



3 Green Lane, Watford, WD19 4NL



Approximate Gross Internal Area
 Ground Floor = 112.4 sq m / 1,210 sq ft
 First Floor = 112.1 sq m / 1,207 sq ft
 Loft Space = 41.6 sq m / 448 sq ft
 (Including Eaves)
 Total = 266.1 sq m / 2,865 sq ft



Illustration for identification purposes only,
 measurements are approximate, not to scale.

