



## **45 The Coppice Yiewsley, UB7 8DX**

**£725 PCM**

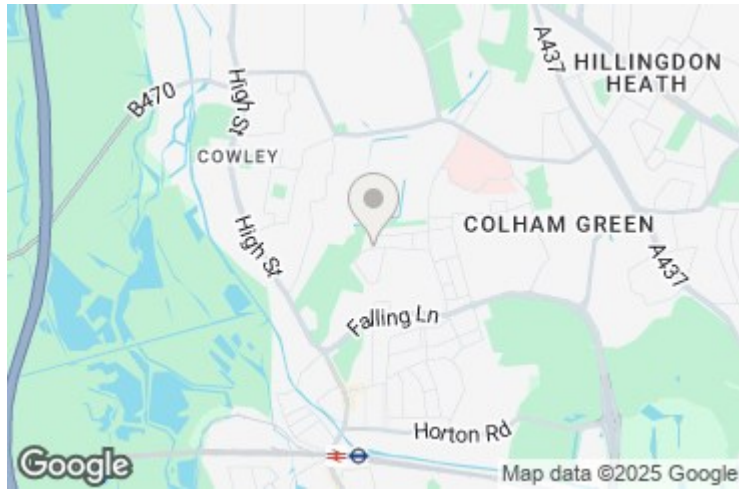
Double room.  
BILLS INCLUDED.

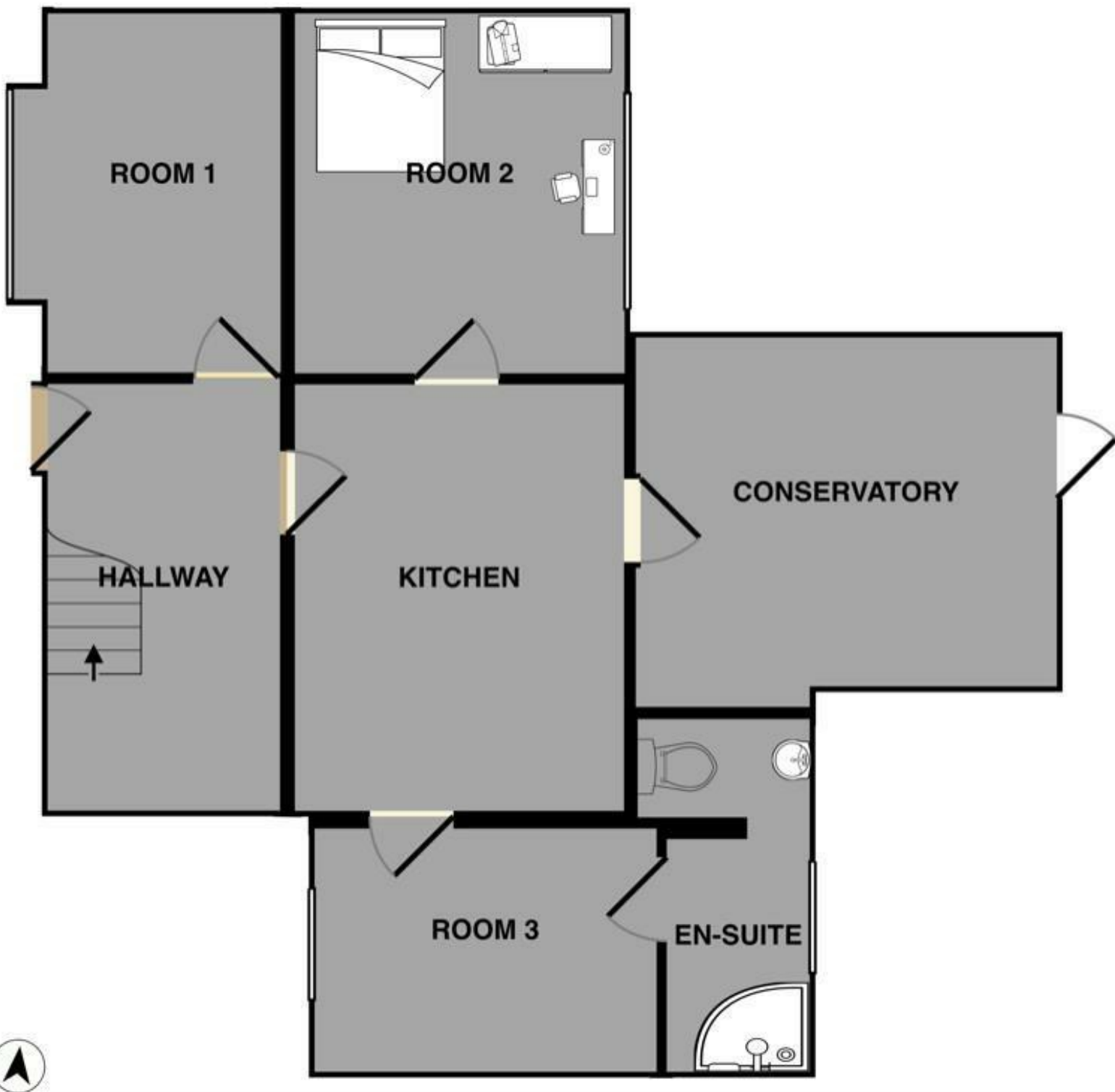
Double furnished room to rent in a 6 bedroom shared house, Ground floor bedroom with single bed, wardrobe, chest of draws and study desk, the property benefits from a communal fitted kitchen, conservatory/living area and a shared shower room on the first floor. The property has gas central heating and double glazed windows, outside there is communal gardens and parking available. The property is located with good access to West Drayton Station and Stockley Park.

Bills included  
Single occupants only.  
EPC 'D'  
Council tax band 'D'



## 45 The Coppice, Yiewsley, UB7 8DX





Energy Efficiency Rating		
	Current	Potential
Very energy efficient - lower running costs		
(92 plus) <b>A</b>		
(81-91) <b>B</b>		
(69-80) <b>C</b>		
(55-68) <b>D</b>		
(39-54) <b>E</b>		
(21-38) <b>F</b>		
(1-20) <b>G</b>		
Not energy efficient - higher running costs		
<b>England &amp; Wales</b>		
	EU Directive 2002/91/EC	

Environmental Impact (CO <sub>2</sub> ) Rating		
	Current	Potential
Very environmentally friendly - lower CO <sub>2</sub> emissions		
(92 plus) <b>A</b>		
(81-91) <b>B</b>		
(69-80) <b>C</b>		
(55-68) <b>D</b>		
(39-54) <b>E</b>		
(21-38) <b>F</b>		
(1-20) <b>G</b>		
Not environmentally friendly - higher CO <sub>2</sub> emissions		
<b>England &amp; Wales</b>		
	EU Directive 2002/91/EC	