



**69 Ratcliffe Close  
Uxbridge, London UB8 2DD  
£1,910 PCM**

**Deposit required £2,250**

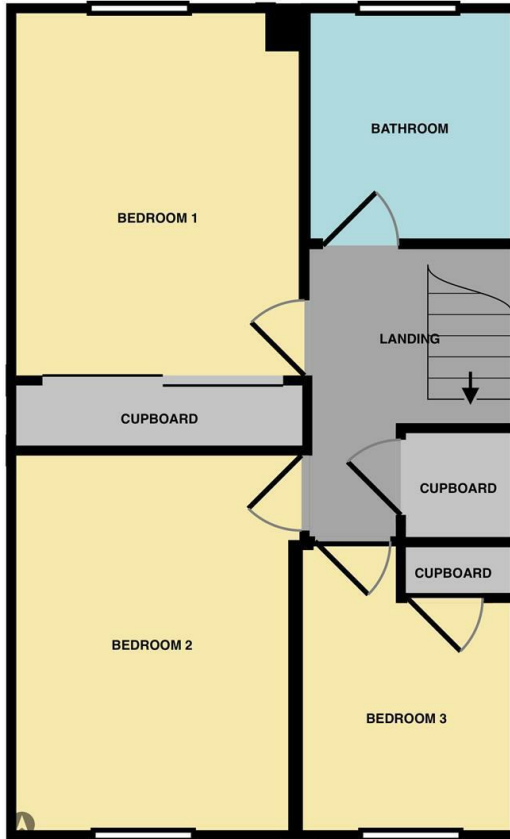
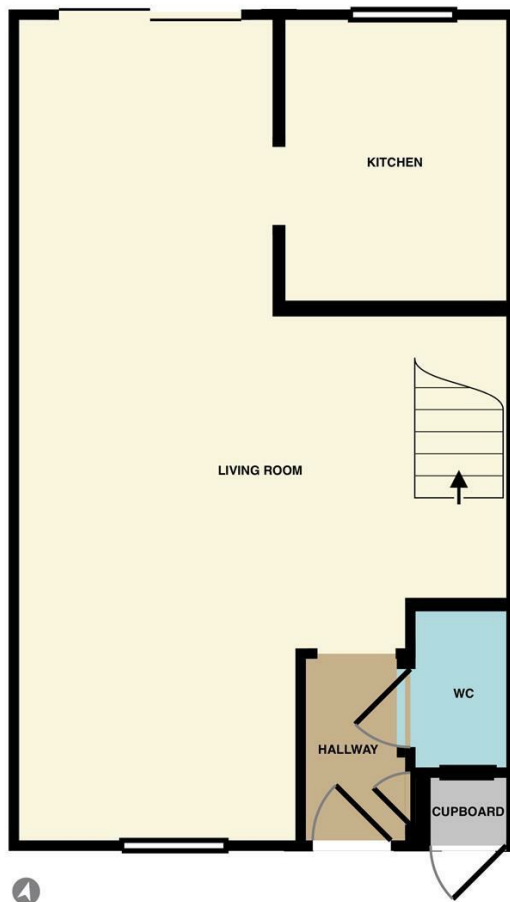
**Available date 4th  
September 2026**

3 BEDROOMS - AVAILABLE 04/09/2026

Nupad offer this excellent Three-bedroom house comprising of THREE FURNISHED BEDROOMS , a LOUNGE/dining room BATHROOM AND modern KITCHEN facilities, downstairs WC. Outside there is an enclosed rear garden and 1 parking space.

The property is located in a small cul de sac. It is also nearby to direct bus routes to Uxbridge Town Centre, Heathrow, Stockley Park and the local underground station, which provides further access to Central London.

COUNCIL TAX BAND D  
EPC C



Energy Efficiency Rating		Current	Potential
Very energy efficient - lower running costs			
(92 plus) A			
(81-91) B			
(69-80) C			
(55-68) D			
(39-54) E			
(21-38) F			
(1-20) G			
Not energy efficient - higher running costs			
England & Wales		75	81
EU Directive 2002/91/EC			

Environmental Impact (CO <sub>2</sub> ) Rating		Current	Potential
Very environmentally friendly - lower CO <sub>2</sub> emissions			
(92 plus) A			
(81-91) B			
(69-80) C			
(55-68) D			
(39-54) E			
(21-38) F			
(1-20) G			
Not environmentally friendly - higher CO <sub>2</sub> emissions			
England & Wales			
EU Directive 2002/91/EC			