



**33 Lowdell Close  
Middlesex, UB7 8AZ  
£1,050 PCM**

**Available 10th August 2026**

**Deposit Required £1,200**

A Lovely and spacious REFURBISHED ground floor STUDIO APARTMENT situated just a stones throw from Hillingdon Hospital. Uxbridge Town Centre and Heathrow Airport & Stockley Park Business Centre are a short drive away. MODERN KITCHEN, MODERN SHOWER ROOM, Fully fitted kitchen with appliances. Double glazing, Allocated parking, Communal garden. The flat comes part furnished.

# 33 Lowdell Close, Middlesex, UB7 8AZ

## Hall



## Kitchen

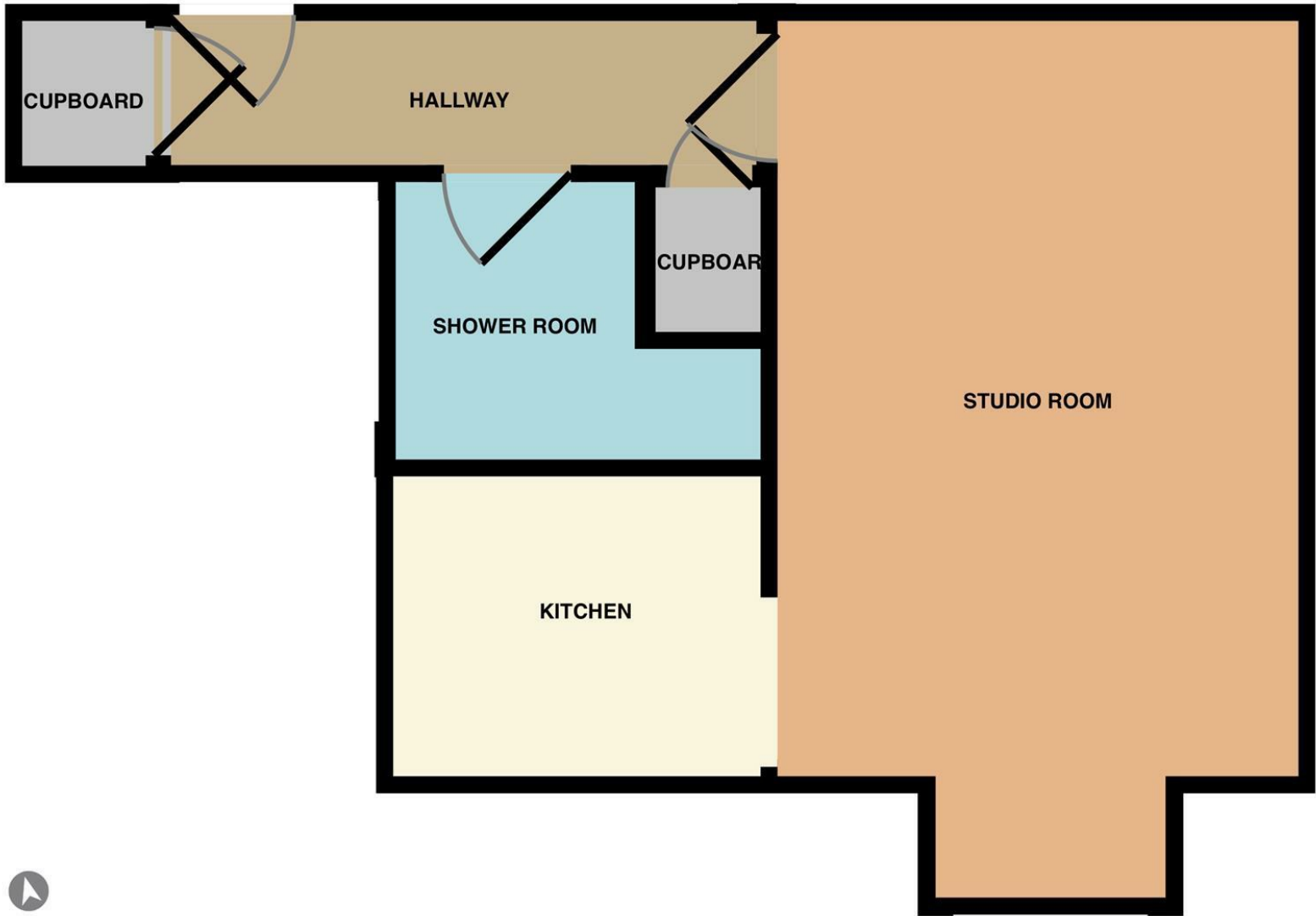


## Studio Room



## Shower room





Energy Efficiency Rating		Current	Potential
Very energy efficient - lower running costs			
(92 plus) <b>A</b>			
(81-91) <b>B</b>			
(69-80) <b>C</b>			
(55-68) <b>D</b>			
(39-54) <b>E</b>			
(21-38) <b>F</b>			
(1-20) <b>G</b>			
Not energy efficient - higher running costs			
<b>England &amp; Wales</b>	EU Directive 2002/91/EC	57	66

Environmental Impact (CO <sub>2</sub> ) Rating		Current	Potential
Very environmentally friendly - lower CO <sub>2</sub> emissions			
(92 plus) <b>A</b>			
(81-91) <b>B</b>			
(69-80) <b>C</b>			
(55-68) <b>D</b>			
(39-54) <b>E</b>			
(21-38) <b>F</b>			
(1-20) <b>G</b>			
Not environmentally friendly - higher CO <sub>2</sub> emissions			
<b>England &amp; Wales</b>	EU Directive 2002/91/EC	59	66